



GUILDFORD
B O R O U G H

James Whiteman
Managing Director

www.guildford.gov.uk

Dear Councillor

PLANNING COMMITTEE - WEDNESDAY, 2ND DECEMBER, 2020

Please find attached the following:

Presentations (Pages 1 - 56)

Yours sincerely

Sophie Butcher, Democratic Services Officer

Encs

This page is intentionally left blank

19/P/01994

**Safeguard Bus Depot and
7 Ridgemount
Guildford**

[Previous](#)

[Next](#)

[Home](#)



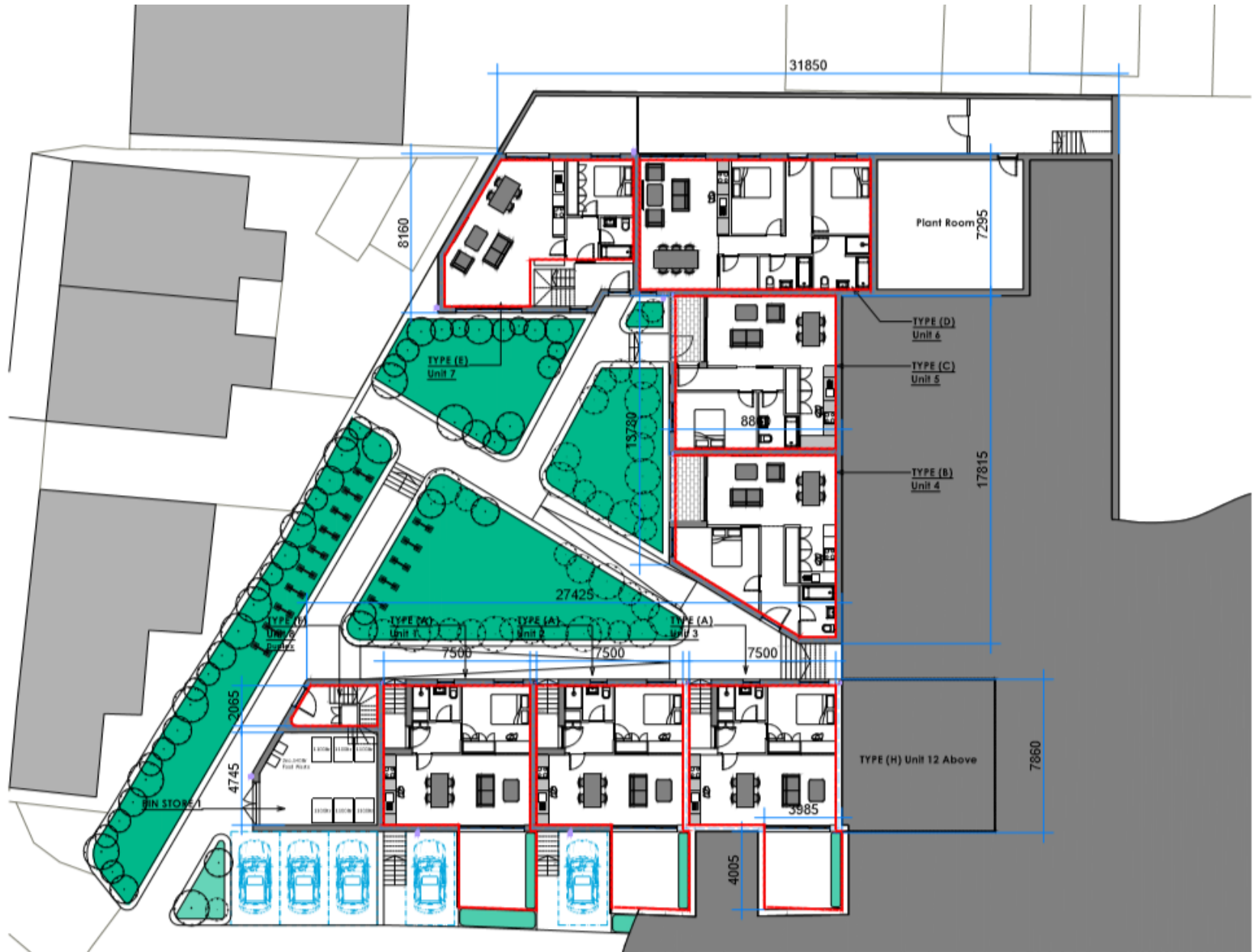


Location plan

[Previous](#)

[Next](#)

[Home](#)

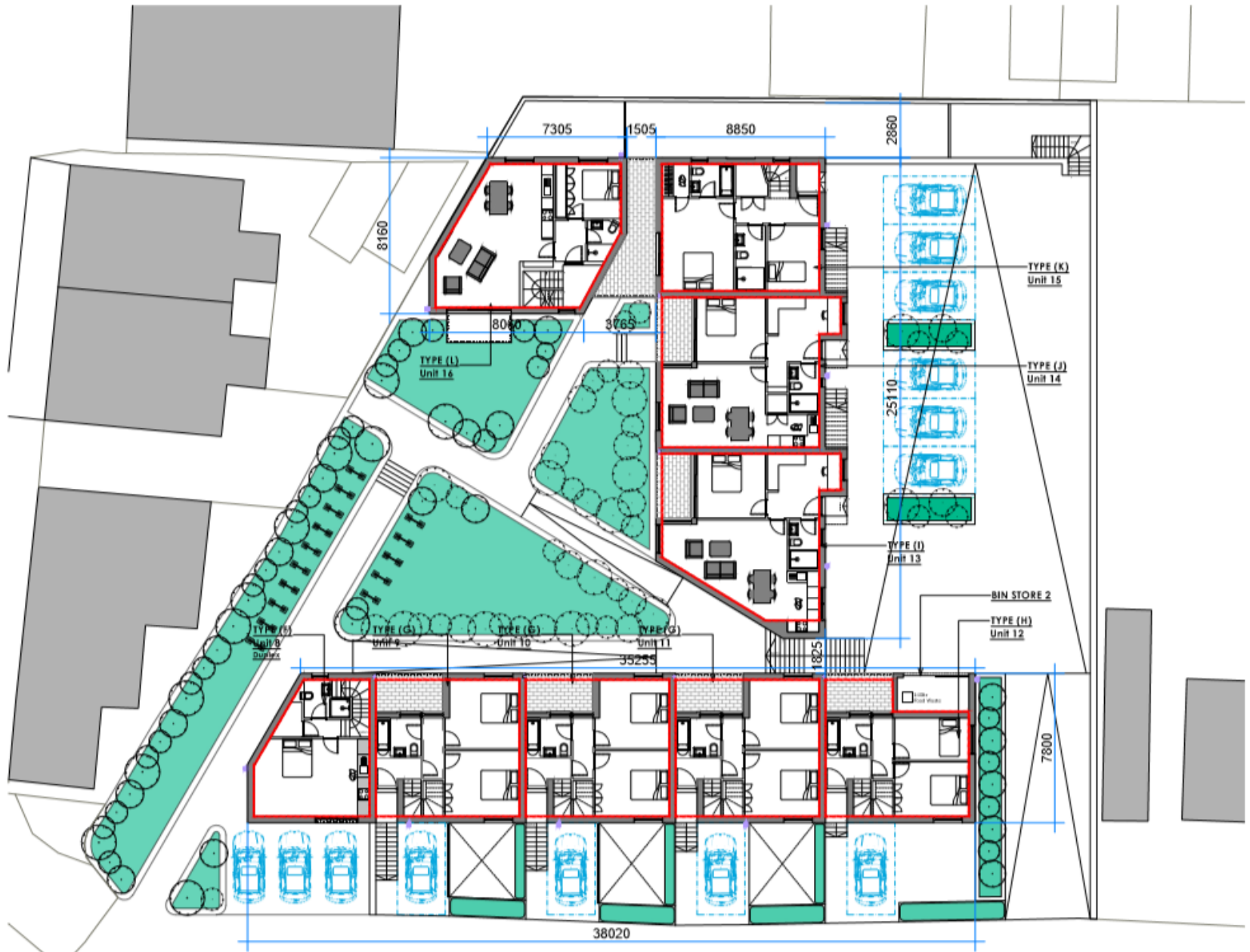


Proposed ground floor

[Previous](#)

[Next](#)

[Home](#)

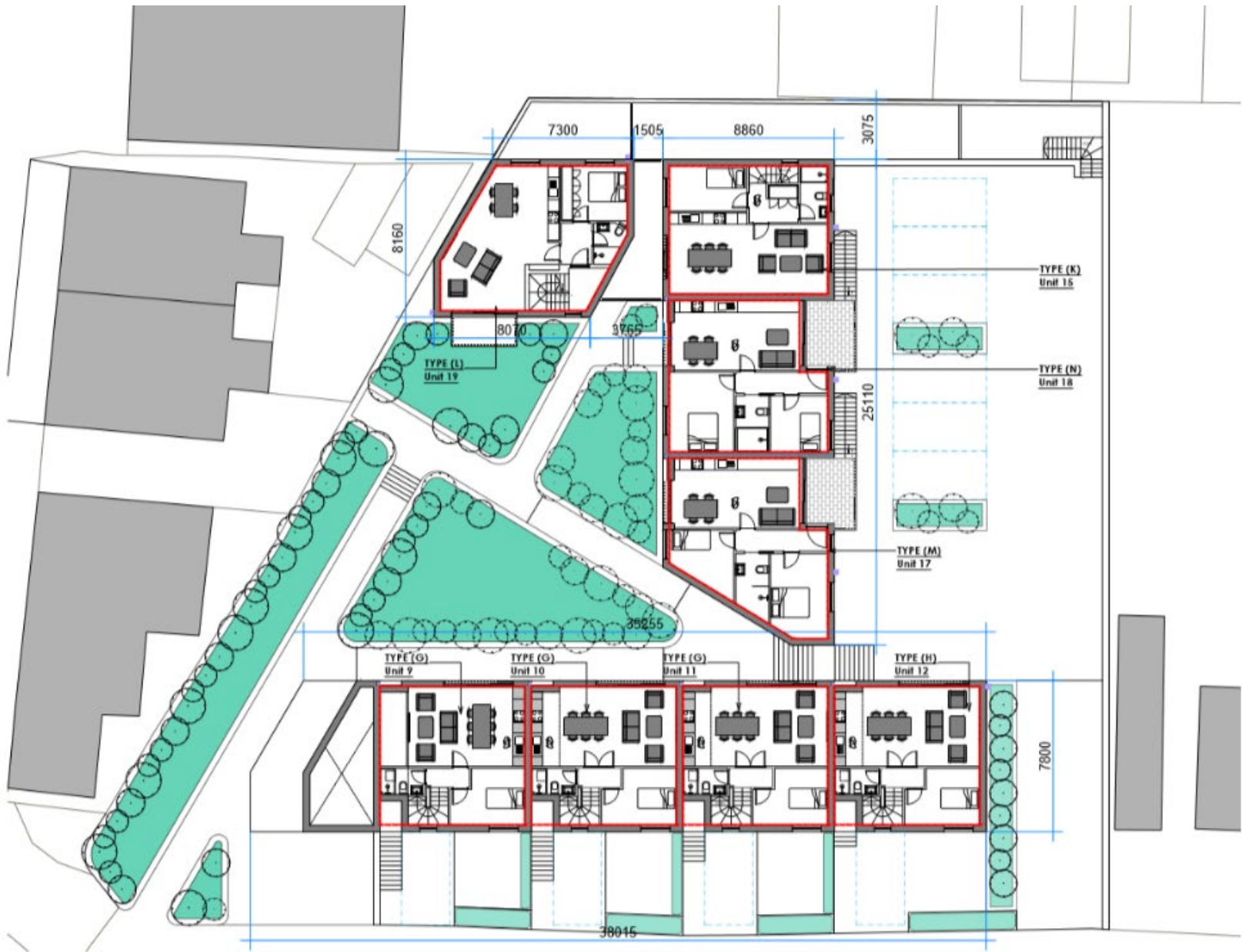


Proposed first floor

[Previous](#)

[Next](#)

[Home](#)



Proposed second floor

Previous

Next

Home

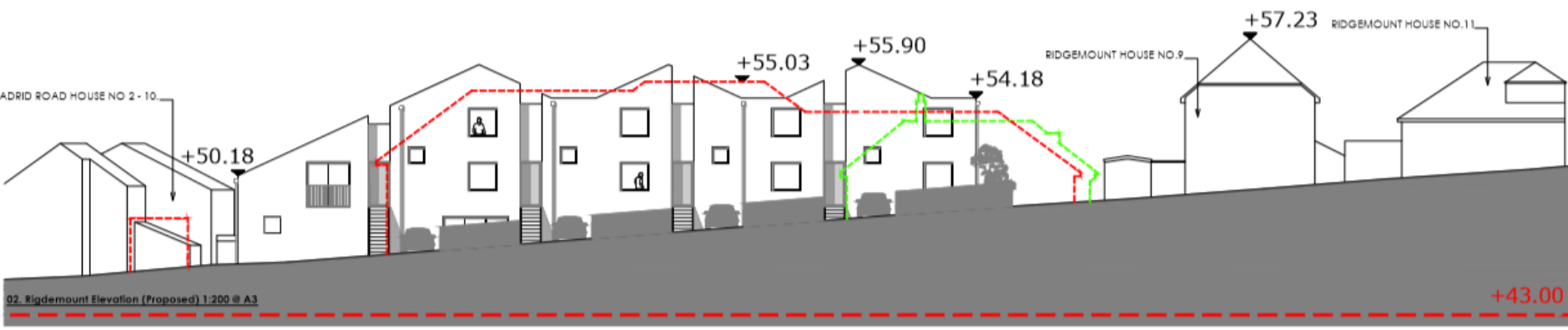
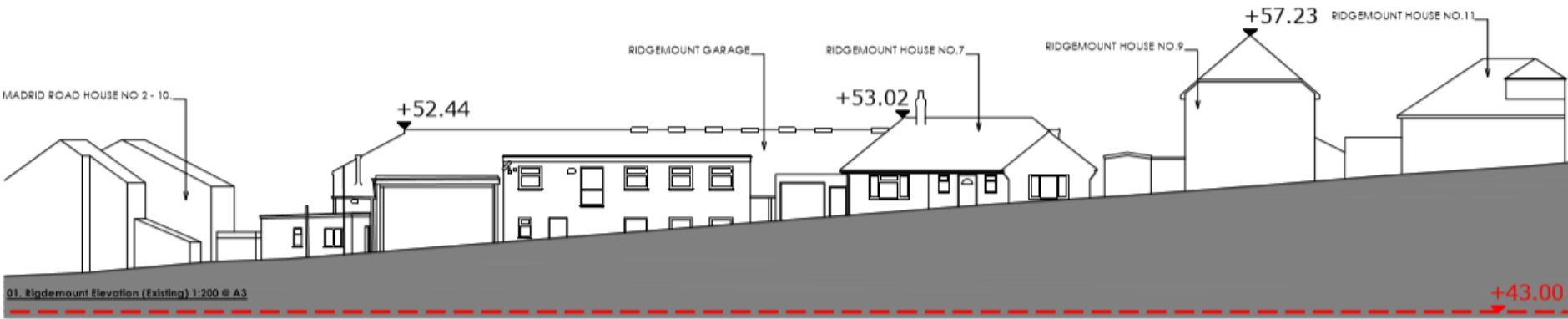


Proposed roof plan

[Previous](#)

[Next](#)

[Home](#)

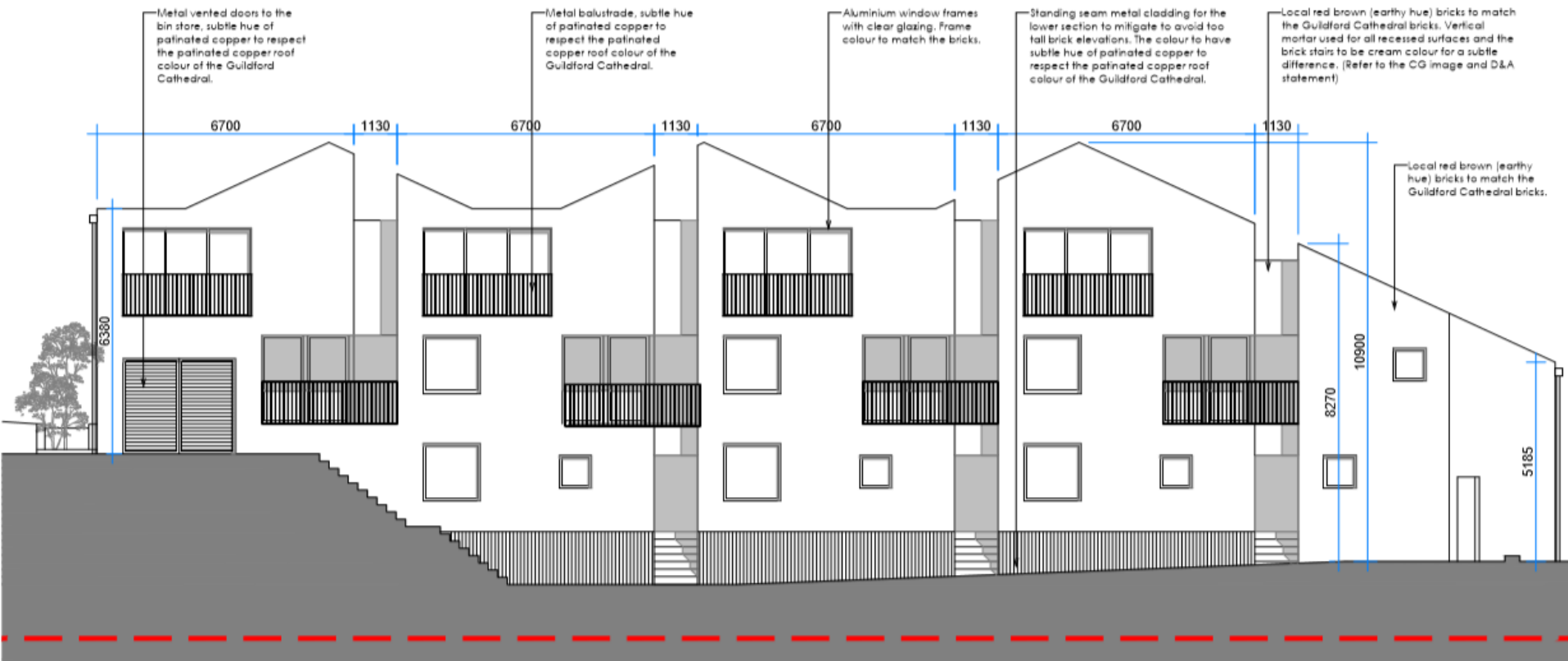


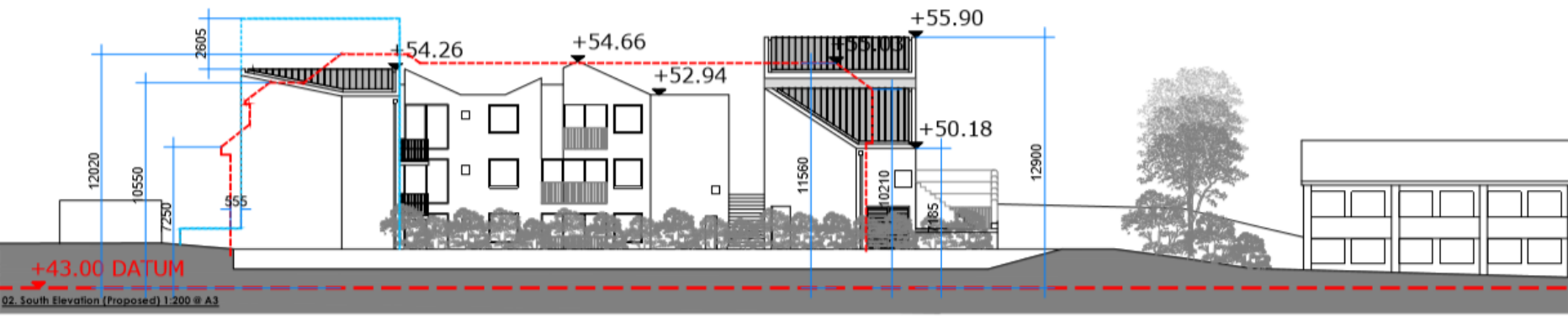
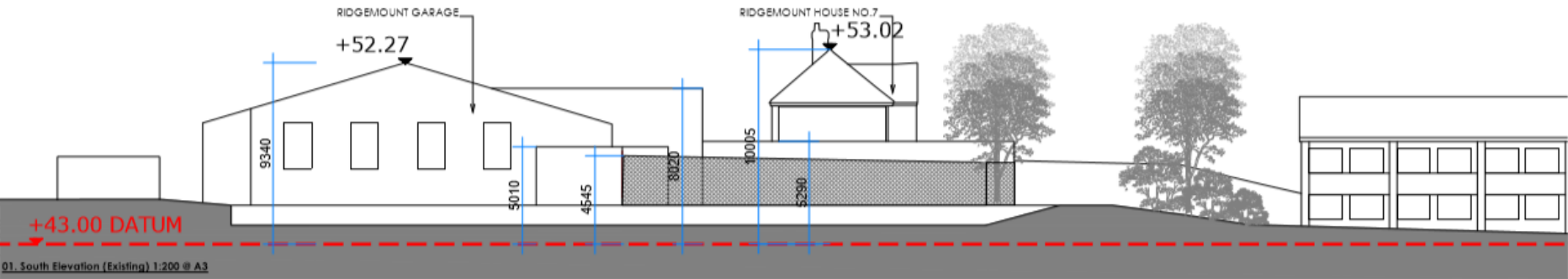
Existing building and outline of approved scheme

Previous

Next

Home

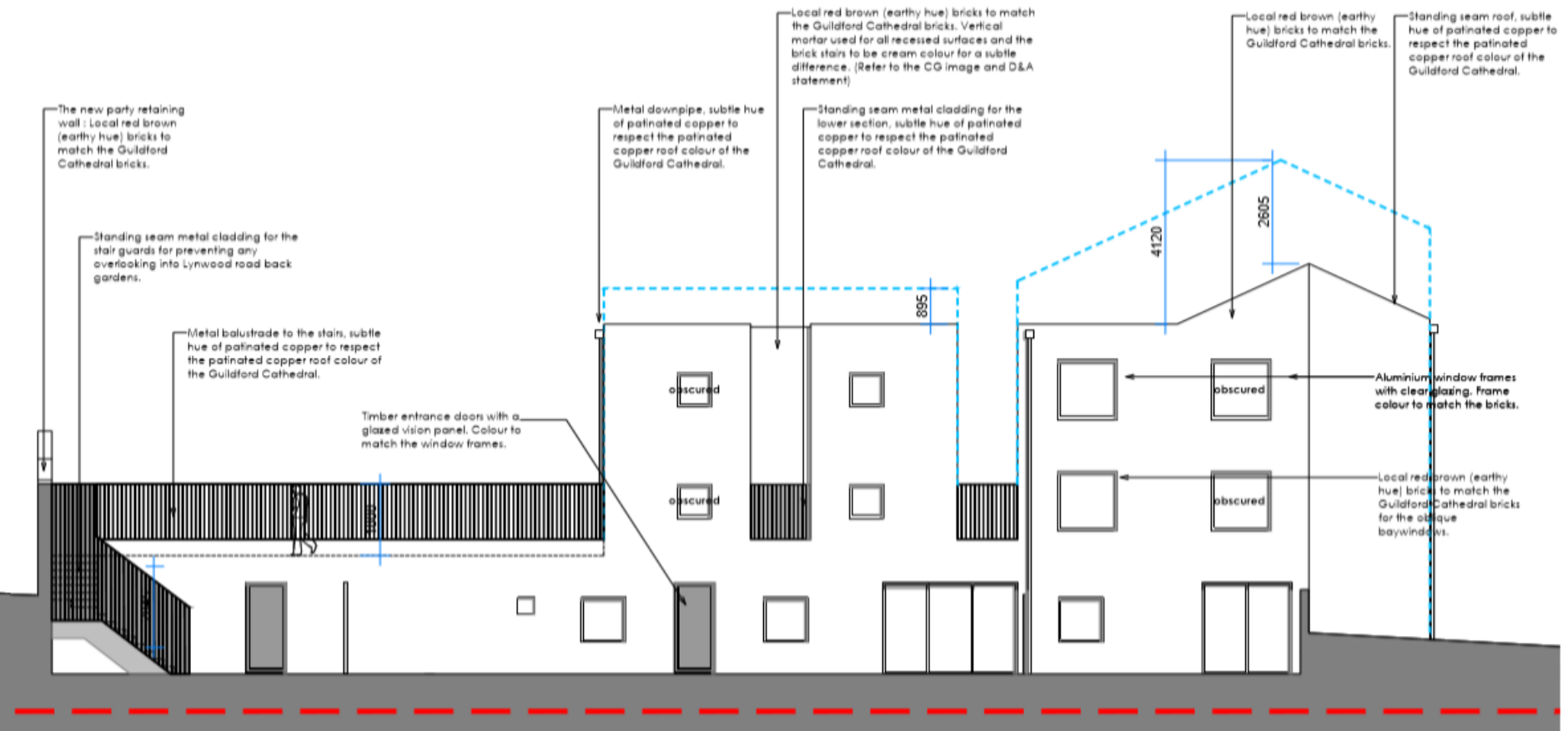




[Previous](#)

[Next](#)

[Home](#)

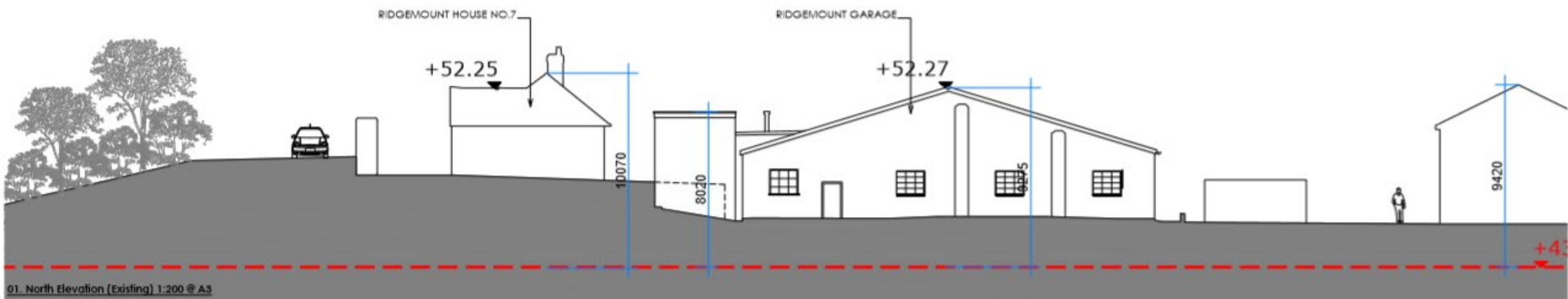


Proposed section

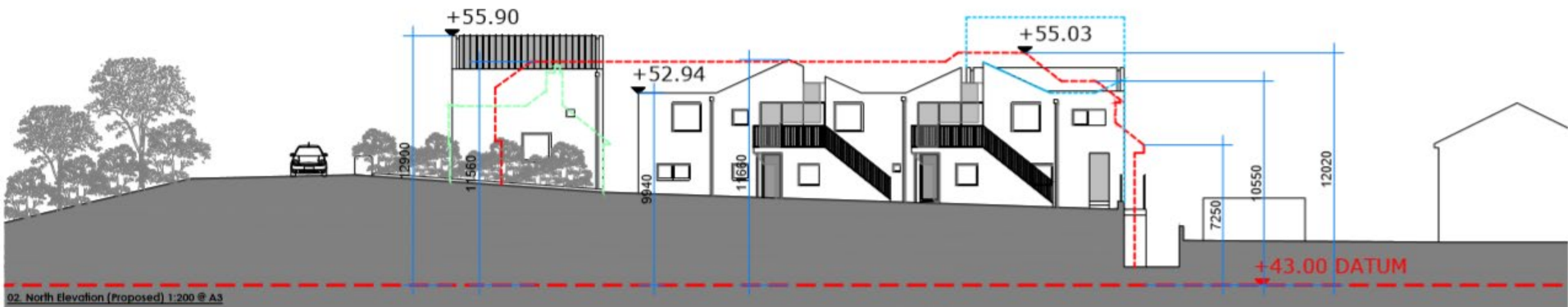
Previous

Next

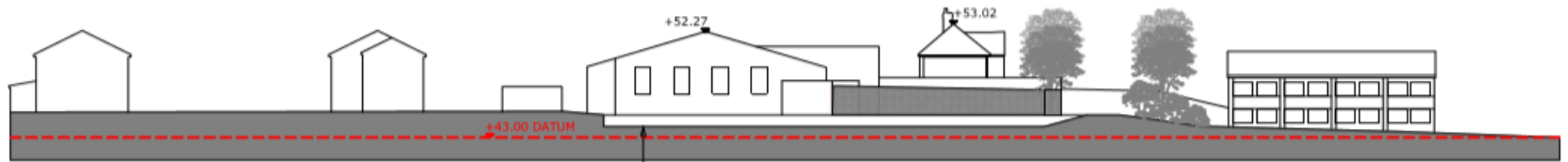
Home



01. North Elevation (Existing) 1:200 @ A3



02. North Elevation (Proposed) 1:200 @ A3



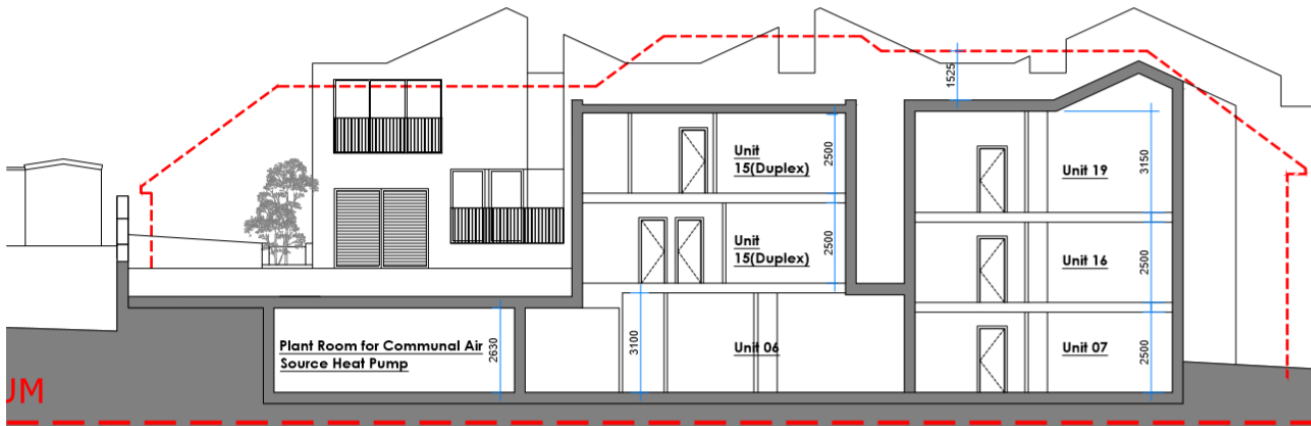
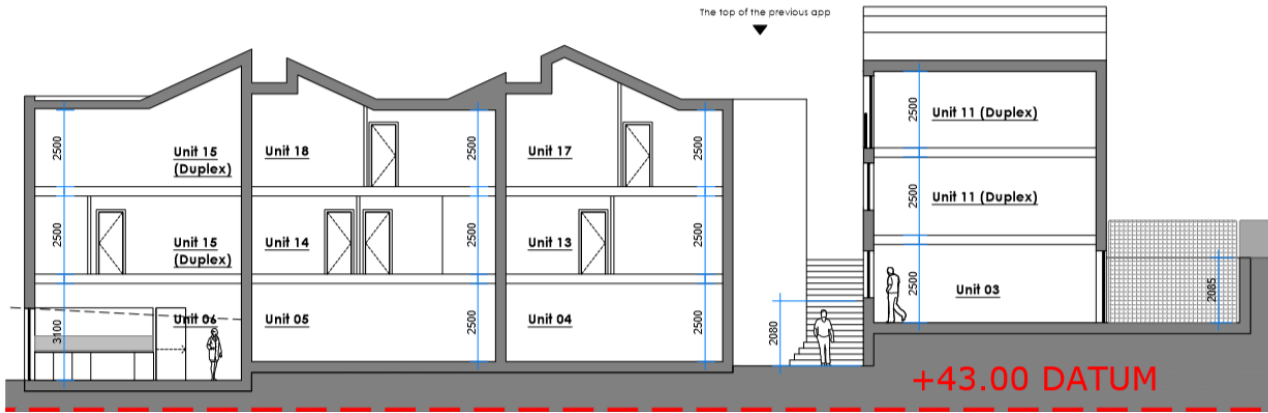
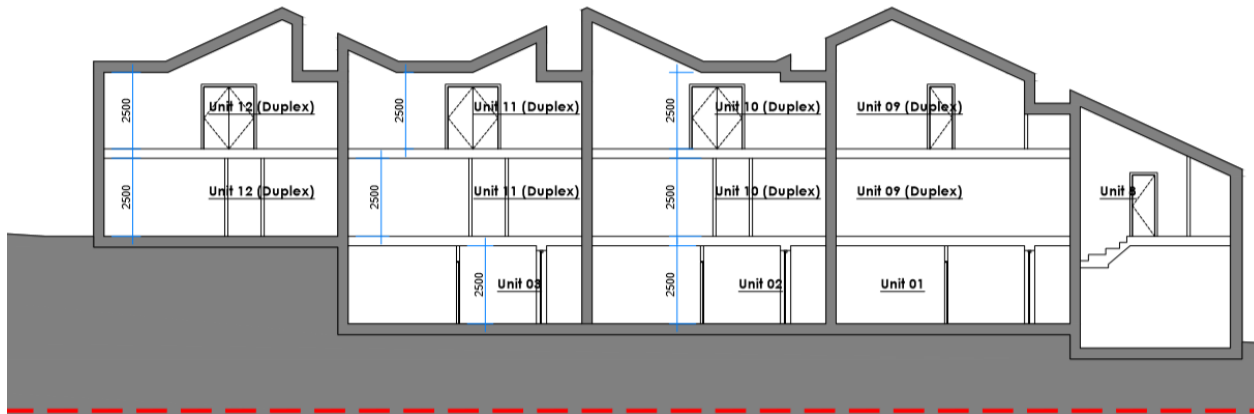
01. South Context Elevation (Existing) 1:400 @ A3

There is a drop in the ground level from the development site to the back yard of Madrid Road House No. 2 - 10



02. South Context Elevation (Proposed) 1:400 @ A3

The volume is adjacent to the car park, instead of the back garden of the houses in Lynwood (Refer to the key plan)



Proposed sections

Previous

Next

Home



View toward Ridgemount

[Previous](#)

[Next](#)

[Home](#)



Internal view of courtyard

[Previous](#)

[Next](#)

[Home](#)



View from no. 9 Ridgemount

[Previous](#)

[Next](#)

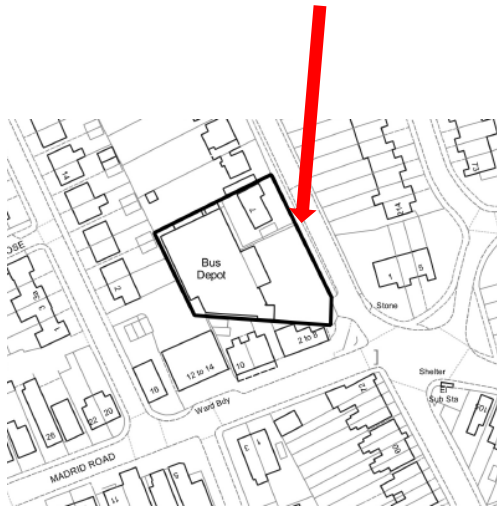
[Home](#)



[Previous](#)

[Next](#)

[Home](#)



[Previous](#)

[Next](#)

[Home](#)



[Previous](#)

[Next](#)

[Home](#)



[Previous](#)

[Next](#)

[Home](#)

This page is intentionally left blank

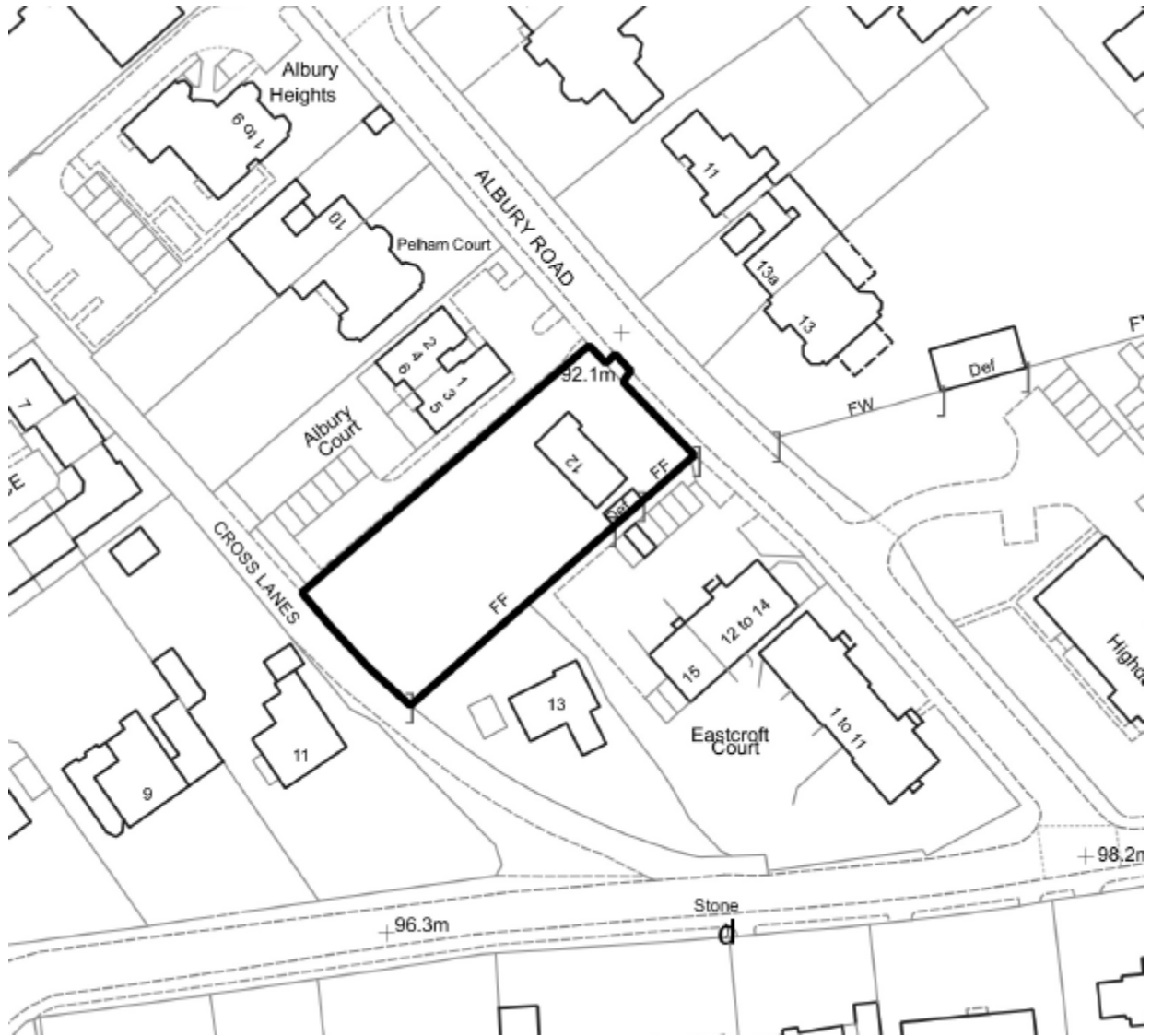
20/P/01059

**12 Albury Road
Guildford**

[Previous](#)

[Next](#)

[Home](#)



Location plan

[Previous](#)

[Next](#)

[Home](#)



Jedyniec Survey, (c) Crown Copyright 2018, All rights reserved, License number 100029432

Block plan

Previous

Next

Home

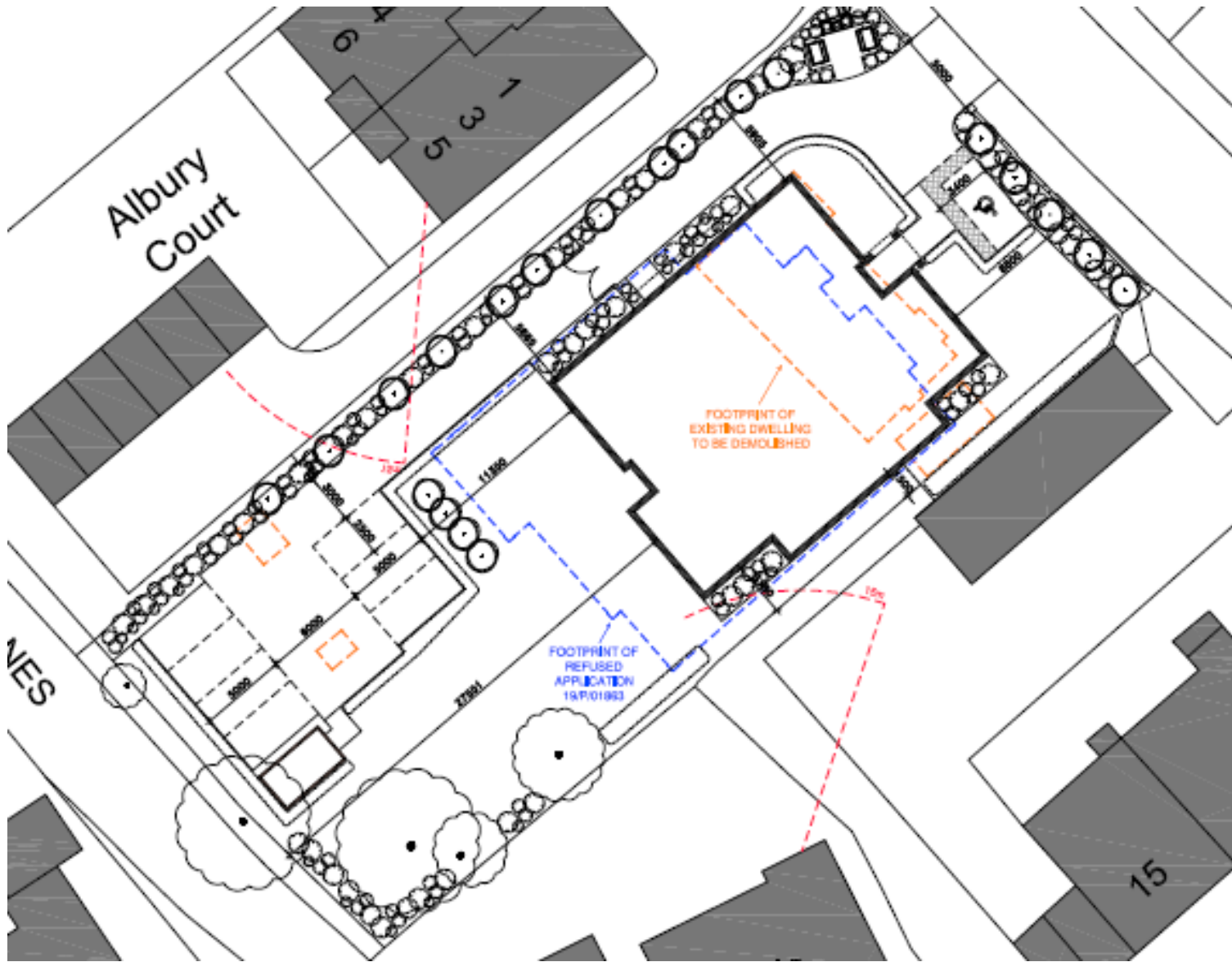


Elevations of refused 19/P/01863 scheme

[Previous](#)

[Next](#)

[Home](#)



Comparison with site layout of refused 19/P/1863 scheme

[Previous](#)

[Next](#)

[Home](#)



Site layout

[Previous](#)

[Next](#)

[Home](#)



NORTH-EAST ELEVATION



SOUTH-WEST ELEVATION



SOUTH-EAST ELEVATION

(FLANK WINDOWS OBSCURE GLAZED UP TO 1.7m ABOVE FLOOR LEVEL
& ROOF LIGHT CILLS POSITIONED 1.7m ABOVE FLOOR LEVEL)



NORTH-WEST ELEVATION

(FLANK WINDOWS OBSCURE GLAZED UP TO 1.7m ABOVE FLOOR LEVEL
& ROOF LIGHT CILLS POSITIONED 1.7m ABOVE FLOOR LEVEL)

Proposed elevations

[Previous](#)

[Next](#)

[Home](#)



EASTCROFT COURT

12 ALBURY ROAD

ALBURY COURT

Proposed street scene

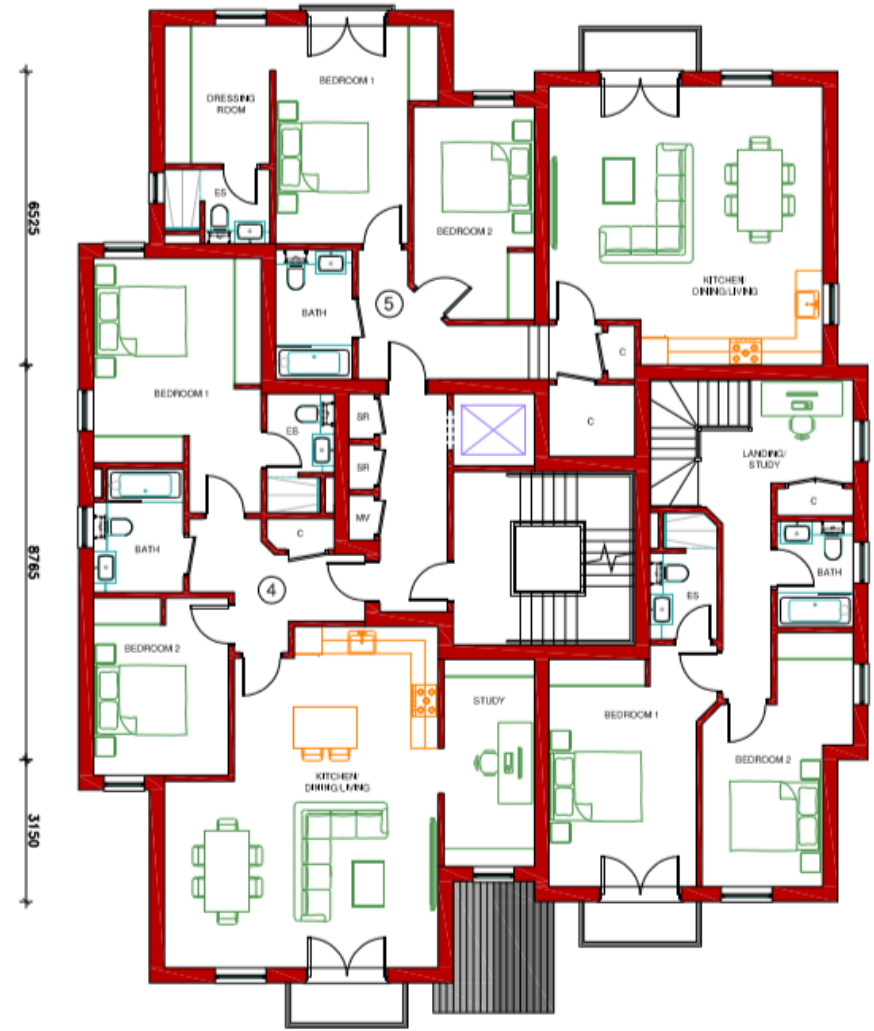
[Previous](#)

[Next](#)

[Home](#)



GROUND FLOOR PLAN



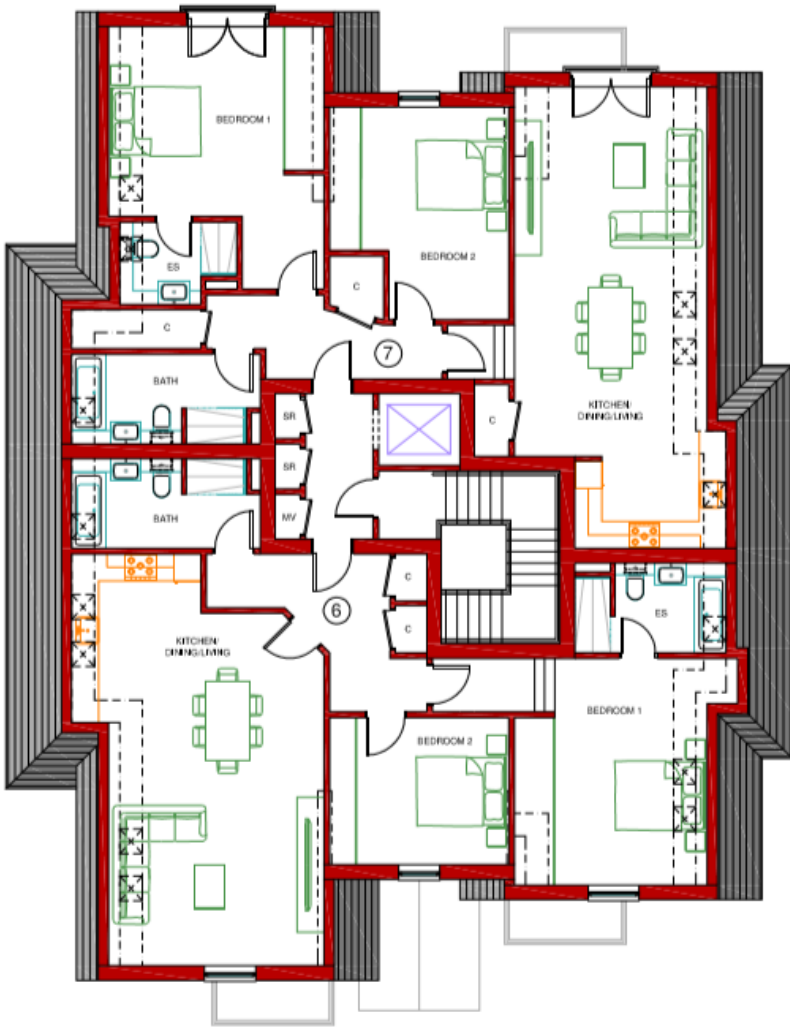
FIRST FLOOR PLAN

Proposed floor plans

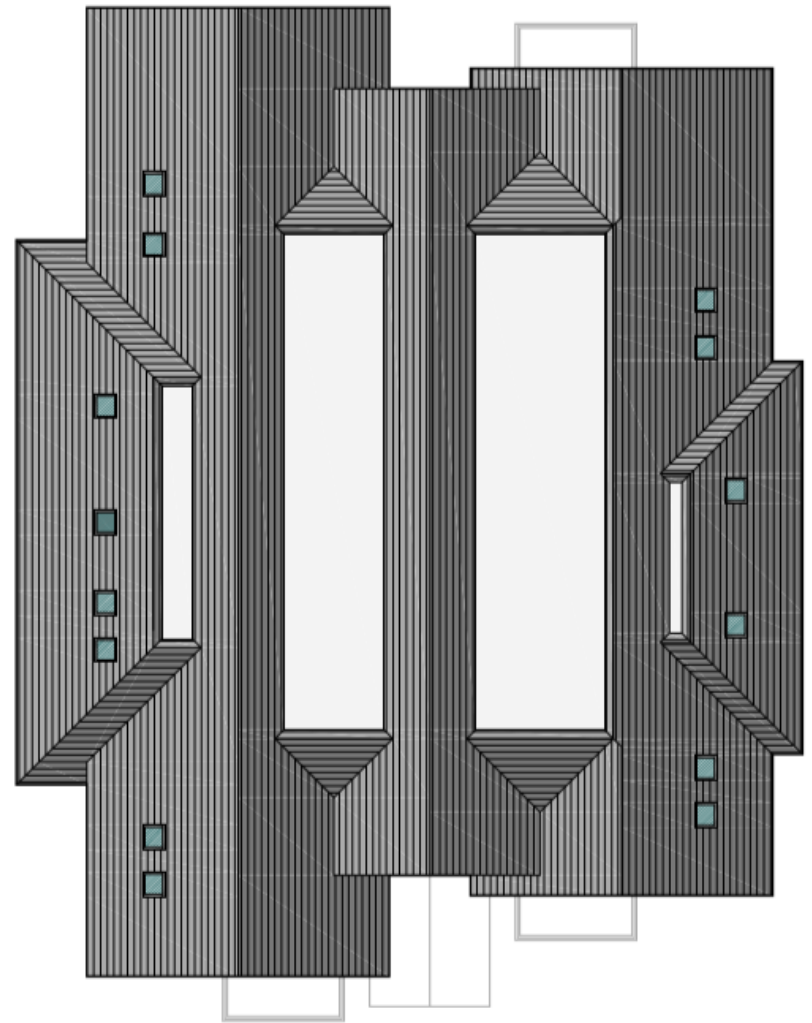
Previous

Next

Home



SECOND FLOOR PLAN



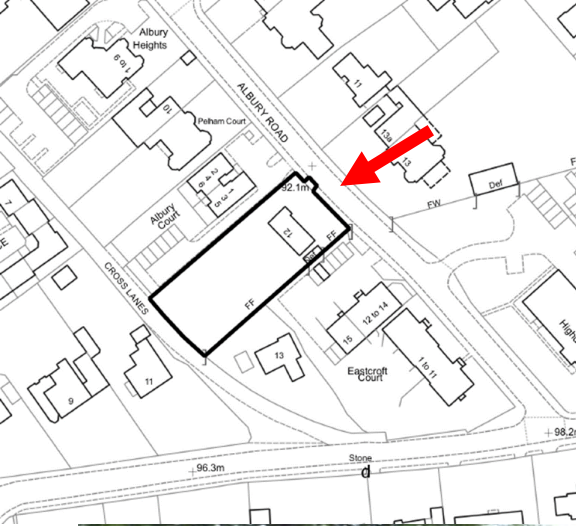
ROOF PLAN

Proposed floor plans

Previous

Next

Home



[Previous](#)

[Next](#)

[Home](#)



[Previous](#)

[Next](#)

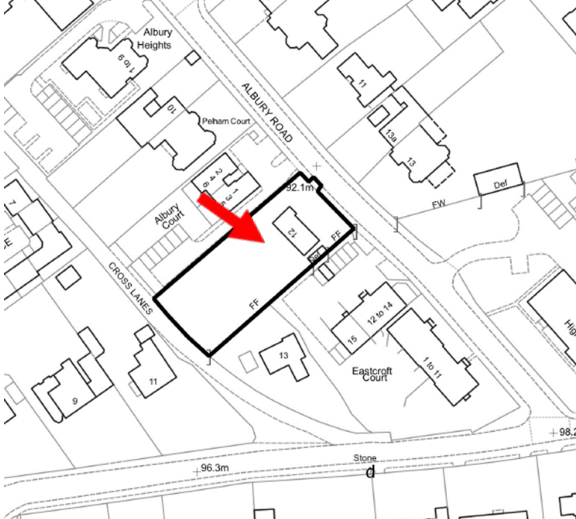
[Home](#)



[Previous](#)

[Next](#)

[Home](#)



[Previous](#)

[Next](#)

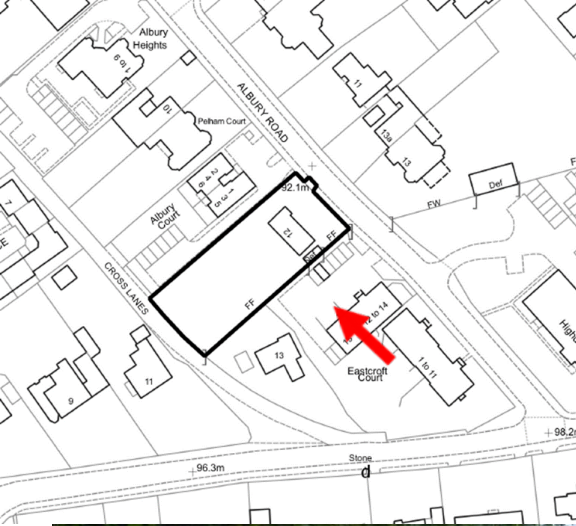
[Home](#)



[Previous](#)

[Next](#)

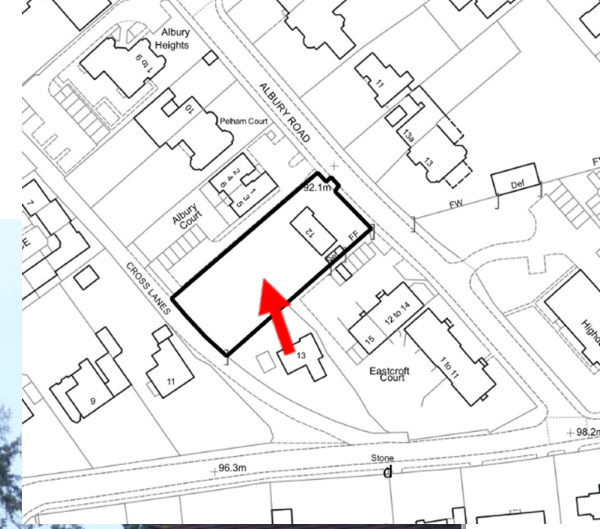
[Home](#)



[Previous](#)

[Next](#)

[Home](#)



[Previous](#)

[Next](#)

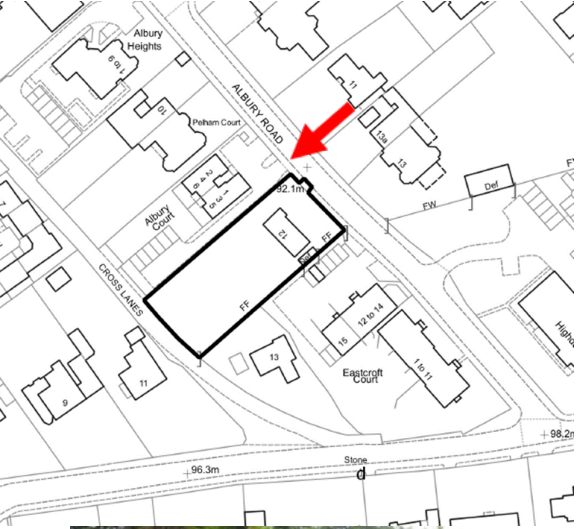
[Home](#)



[Previous](#)

[Next](#)

[Home](#)



[Previous](#)

[Next](#)

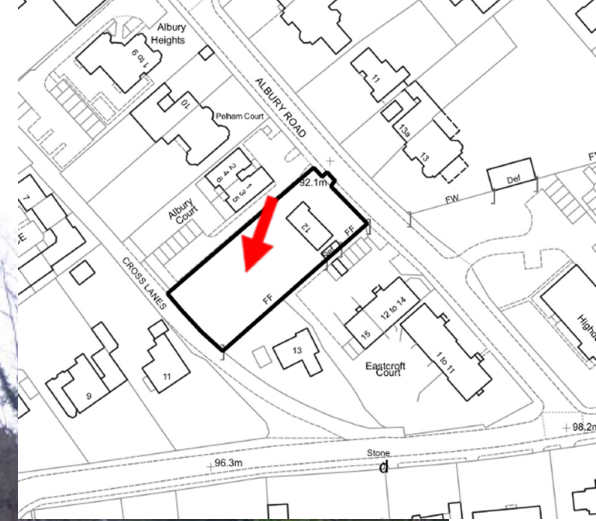
[Home](#)



[Previous](#)

[Next](#)

[Home](#)



[Previous](#)

[Next](#)

[Home](#)



[Previous](#)

[Next](#)

[Home](#)



[Previous](#)

[Next](#)

[Home](#)



Site layout

[Previous](#)

[Next](#)

[Home](#)

20/P/00585

**Commercial Road
Hereford Close
Guildford**

[Previous](#)

[Next](#)

[Home](#)



Location plan

[Previous](#)

[Next](#)

[Home](#)

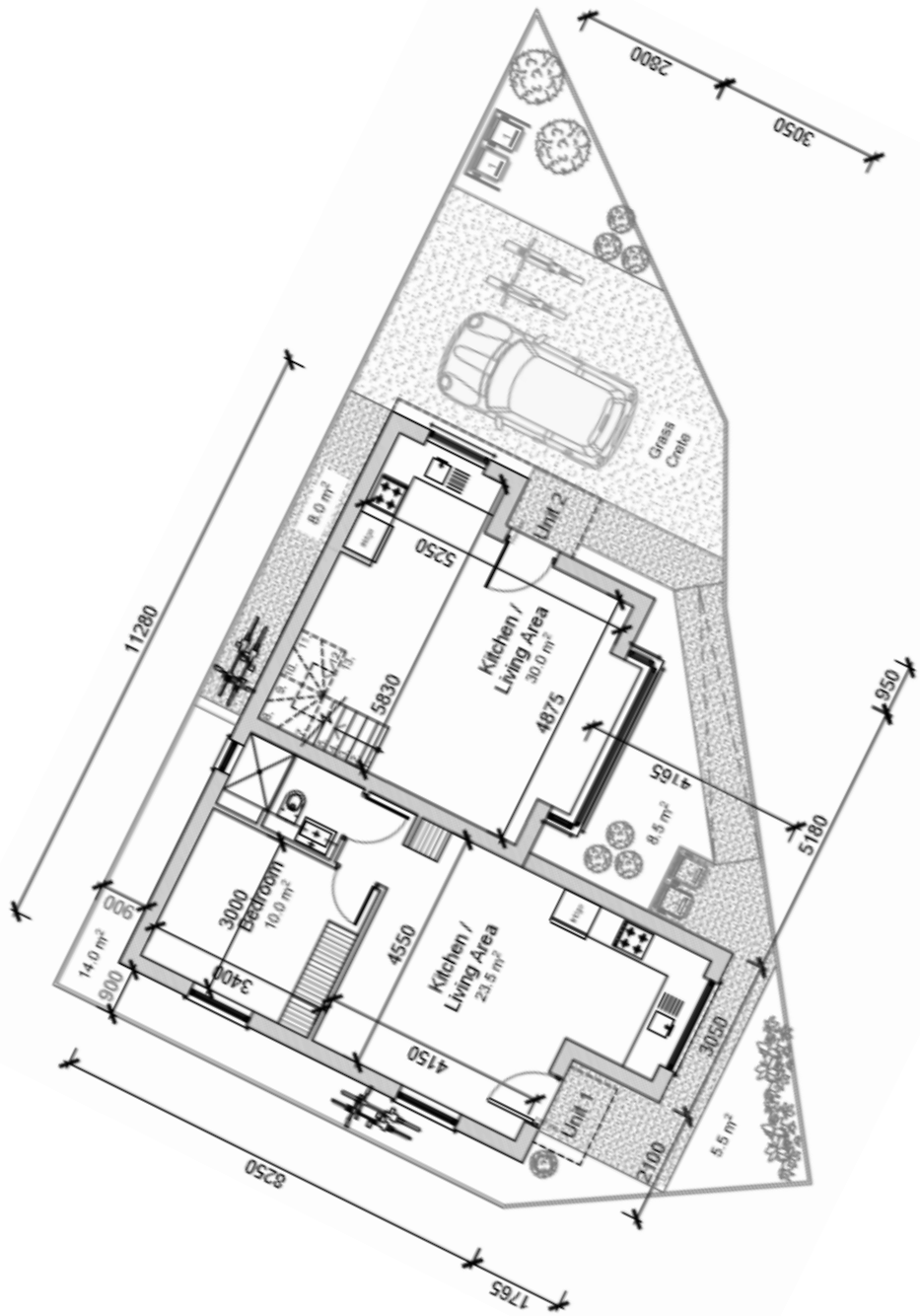


Block plan

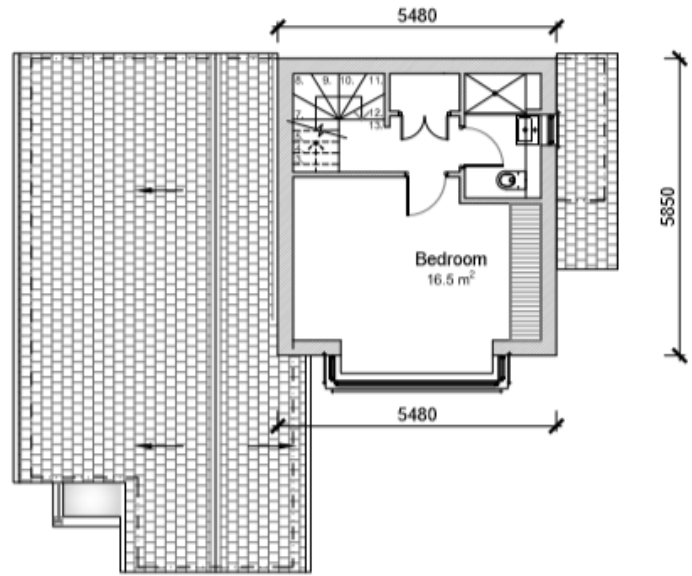
[Previous](#)

[Next](#)

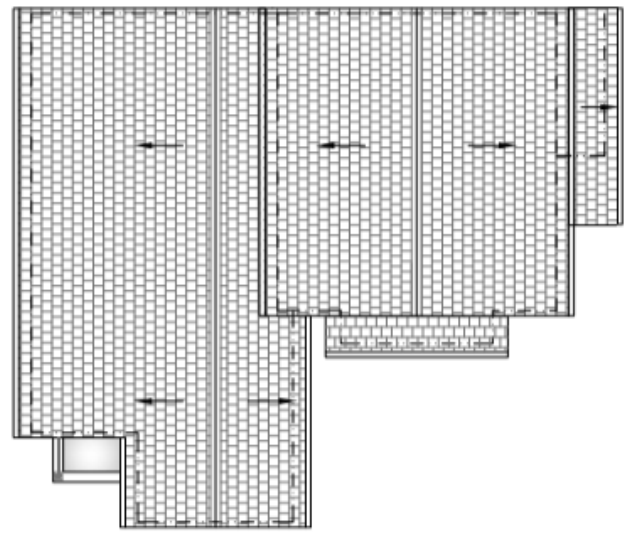
[Home](#)



Proposed floor plans



Proposed First Floor Plan

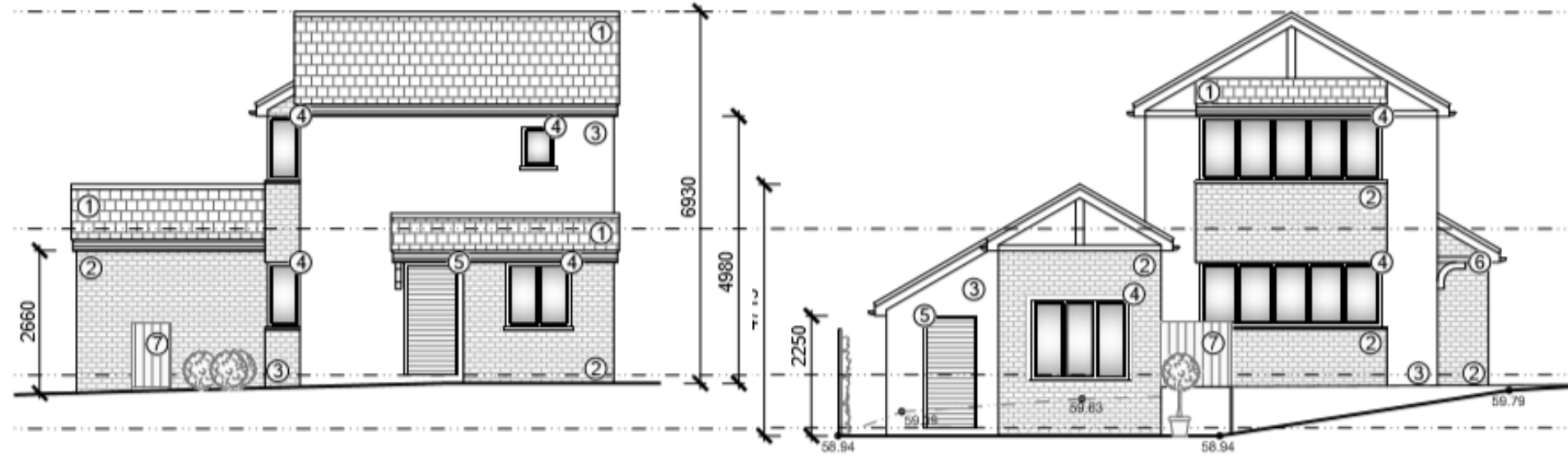


Proposed Roof Plan

[Previous](#)

[Next](#)

[Home](#)

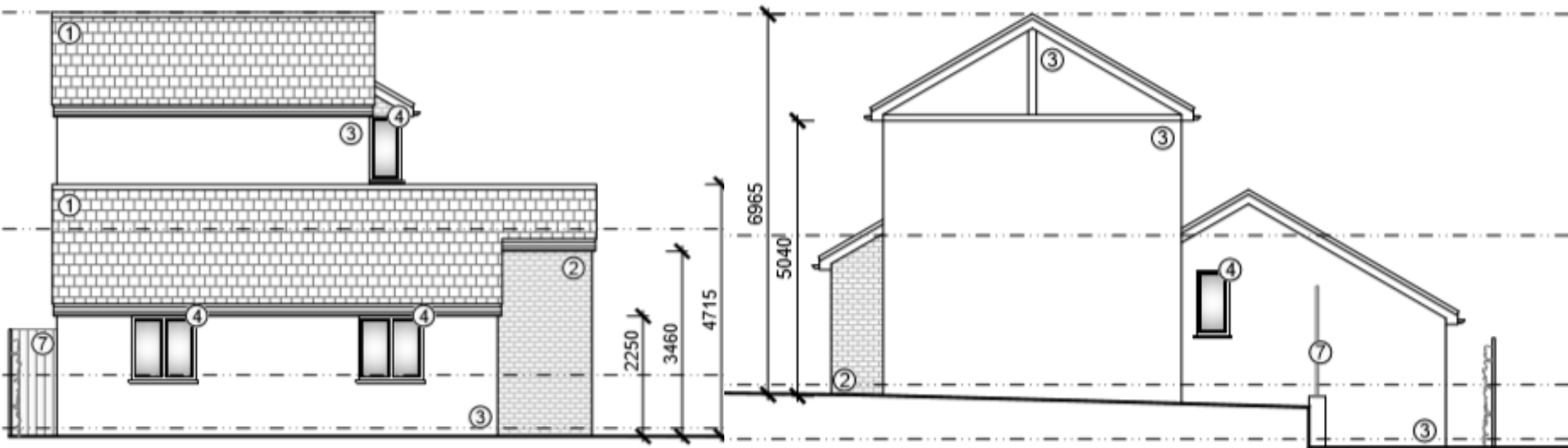


Proposed NE and SE elevations

[Previous](#)

[Next](#)

[Home](#)



Proposed SW and NW elevations

[Previous](#)

[Next](#)

[Home](#)



Looking back at entrance from the site.

[Previous](#)

[Next](#)

[Home](#)



Southern corner looking to north corner of site adjacent to 6 Hereford
Close

[Previous](#)

[Next](#)

[Home](#)



Looking south from entrance to the site towards properties in Aldershot Road.

[Previous](#)

[Next](#)

[Home](#)



Block plan

[Previous](#)

[Next](#)

[Home](#)